

Opening hours:

We are open every day of the year from dusk till dawn.

Directions:

Take Autobahn A93 (Exit Teublitz) - drive to Teublitz - in Teublitz take first right turn to Schwandorf - use second exit at the roundabout - after 800 meters turn right before bridge to Wildpark Höllohe

Entrance fee and parking:

Our park has no entrance fee.
Parking is complementary.

Free internet:

We provide a complementary WiFi hotspot in the main entrance area.

Dogs:

You can bring your dog with you.
All dogs have to be kept on a lead during your visit.

**Accessibility:**

The complete park and the buildings are mostly accessible for people with disabilities. All our trails are usable for wheel chairs and strollers. Restrooms for people with disabilities are available.

All your donations and purchases of animal feed, benefit directly our park and the animals.

We hope you have a pleasant stay at our wildlife park.

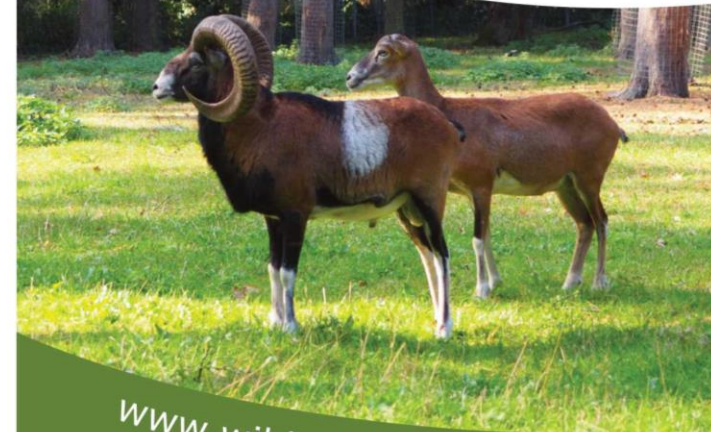
Wild- und Freizeitpark Höllohe
Höllohe 1, 93158 Teublitz

Landkreis Schwandorf
Wackersdorfer Str. 80, 92421 Schwandorf
09431/471-0, poststelle@lra-sad.de

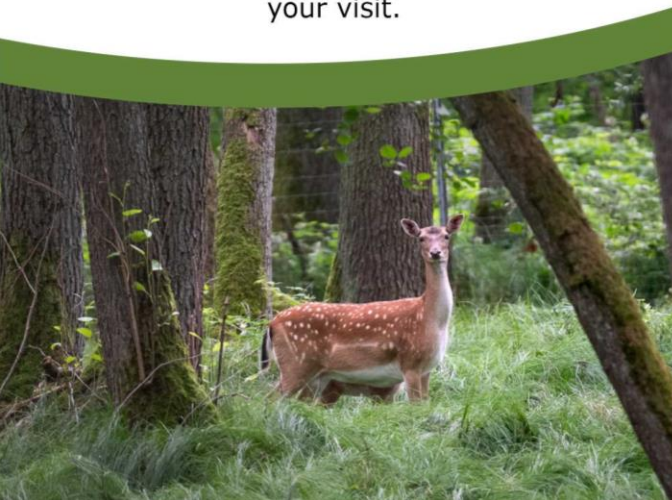


WILD- UND FREIZEITPARK
HÖLLOHE

PARK MAP



www.wildpark-hoellohe.de



Natürlich leb´ich hier



Landkreis
Schwandorf

- A** Small playground
- B** Large playground
- C** Water habitat
- D** Path of poetry
- E** Nature trail
- F** Farmers & herb garden
- G** Forest exhibit
- H** Nature exhibit

Visit our park and experience nature with your family!

- Large playground for children
- Projects to save rare farm animals
- Wild animals in natural habitats
- Special animal feed for purchase
- Nature trails and exhibits

**FREE
ADMISSION!**

OPEN DAILY!

- 1** Birds
- 2** Bunnies & guinea pigs
- 3** Turtles
- 4** Shetland Ponies
- 5** Red deer
- 6** Mouflon
- 7** Fallow deer
- 8** Goats
- 9** Wild boar
- 10** Snow owl
- 11** Pheasants & partridges
- 12** Large aviary with pond
- 13** Donkey
- 14** Sheep

